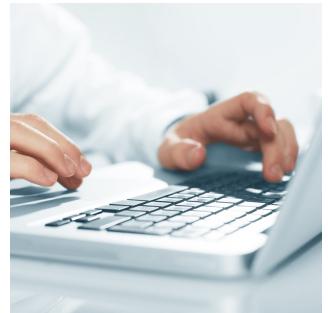


Student job, Master thesis, Bachelor thesis, Project thesis

Simulation of intralogistic driving tasks

The majority of intralogistics vehicles are driven manually, since human drivers are superior to automated systems in many respects as things stand today. In order to make human capabilities usable for automated systems, we simulate human driving behavior in logistics environments.



Your tasks

- Systematic selection of a simulation environment for mapping intralogistic activities
- Test setup of simplified scenarios
- Conducting tests to incorporate human driving behavior into a simulation
- Working with a team to ensure that all requirements and specifications are met

Your profile

You are studying one of the following subjects:

- Mechanical Engineering
- Mechatronics
- Electrical engineering
- Industrial engineering
- Computer science

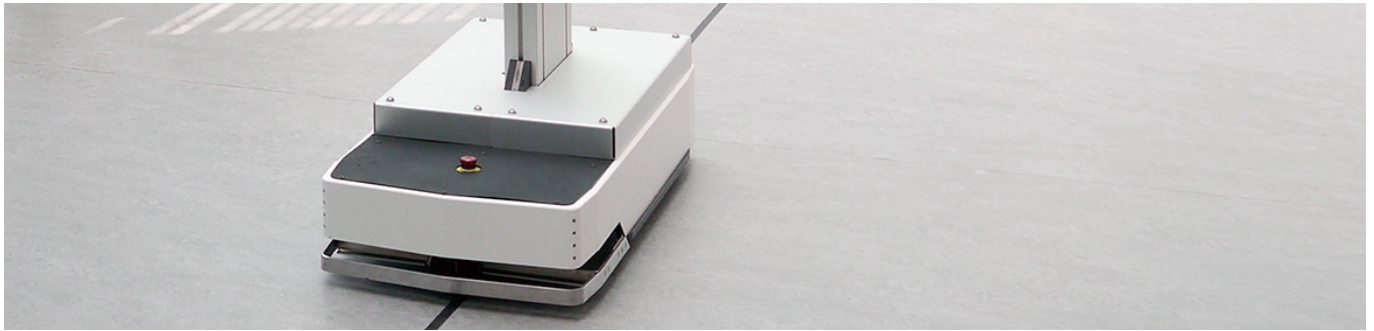
You are interested in automation, simulations or game development.

Ideally you have knowledge in programming with C++/C#/Python, game development or you have a great drive to get involved in these topics.

Very good German and/or English language skills in written and spoken are necessary for the job.

We offer

- adequate remuneration (student job only)
- independent work
- flexible working hours
- well-equipped workplaces
- home office by arrangement
- test execution
- long-term cooperation (optional)



Bitte sende deine aussagekräftige Bewerbung in einer einzigen PDF-Datei an jobs@iph-hannover.de.

Die Bewerbung muss Anschreiben, Lebenslauf sowie Prüfungsleistungen des Studiums / Zeugnisse enthalten.

Contact



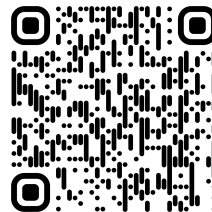
Alexander Poschke
M.Sc.

+49 (0)511 279 76-229

IPH - Institut für Integrierte Produktion Hannover gGmbH
Hollerithallee 6
30419 Hannover

www.iph-hannover.de

Still not convinced?



Besuche unsere Website oder
Social Media Kanäle und bekomme
einen ersten Eindruck von uns!

